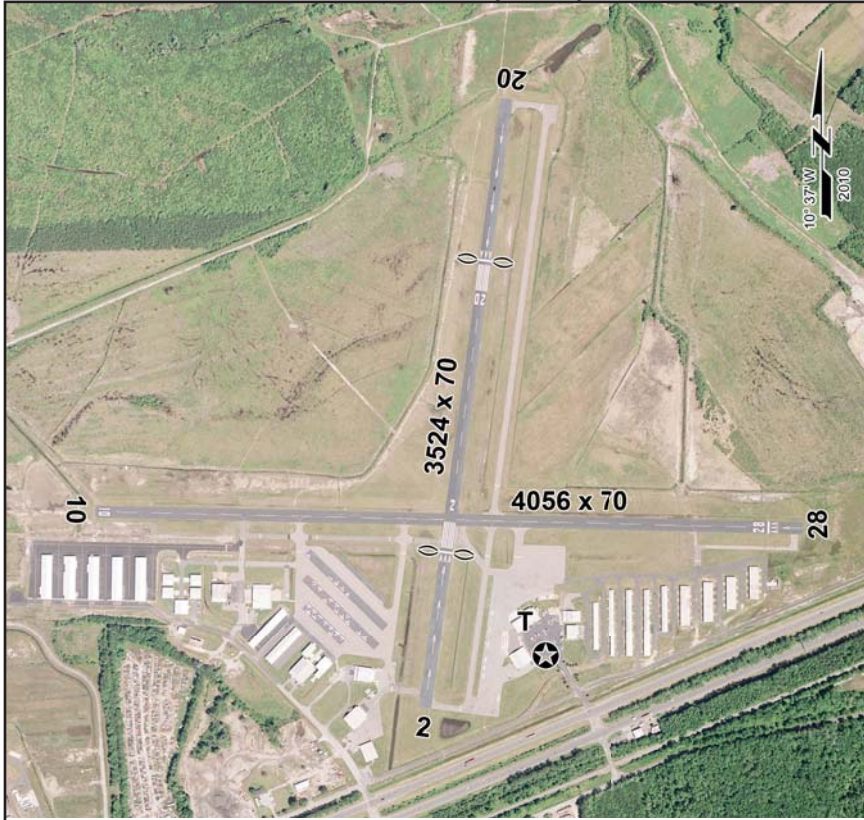


HAMPTON ROADS EXECUTIVE (PVG)

7 SW



Sectional Chart: Washington

Runway: Rwy 10-28 H4057 x 70 (ASPH); Rwy 02-20 H3524 x 70 (ASPH)

Rwy 28 thld dsplcd 190', Rwy 02 thld dsplcd 898', Rwy 20 thld dsplcd 928'

Traffic Pattern: Rwy 10 Right traffic (fixed wing aircraft); Rwy 20 right traffic (fixed wing aircraft; TPA – 700 (677) for helicopters.

Runway Lights: MIRL

Rotating Beacon: Yes

Fuel: 100 LL, Jet A

Maintenance: Major AF & PP

Manager: Steven Fox, 5172 West Military Highway, Suite A, Chesapeake, Virginia 23321-1100, (757) 465-0260; Arpt Office Manager Peggy White (757) 465-0260

Airport Telephone: (757) 465-0260, (757) 488-3166 (for fuel)

Airport Operators: Aerodyne Corporation (757) 488-2898; Backus Aerial Photography (757) 488-0324; Banner Tow (757) 547-2386; Bay Avionics (757) 488-7700; Chesapeake Bay Helicopters (757) 465-9936;

Chesapeake Aviation (757) 488-4825; Curtis Eads Flight School (757) 465-1692; Hampton Roads Charter Service (757) 409-2302; Heloair (757) 465-9946; Mercury Flight Center (757) 488-1687.

Hours of Operation: Attended Apr-Oct 1300-0100Z±, Nov-Mar 1300-2300Z±

Remarks: Extensive helicopter training. Deer on and invof arpt. Rwy 10-28 preferred use rwy. Multiple +1000' AGL towers 1.5 NM northwest of arpt. ACTI-VATE MIRL Rwy 02-20 and Rwy 10-28 – CTAF.

Points of Interest: Dismal Swamp National Wildlife Refuge, Norfolk Naval Shipyard, MacArthur Memorial, Chrysler Museum, Norfolk Waterside, Virginia Beach Resort Area, Chesapeake Bay

Web Site: www.hamptonroadsexecutiveairport.com

Weather Data Sources: AWOS-3 118.375 (757) 465-2175

Communications: CTAF/UNICOM 123.0, Norfolk APP/DEP CON 118.9

Navigation Aids: Norfolk (H) VORTAC 116.9

Published Instrument Approach: Yes

Approach Lighting: None

NORFOLK

Latitude N36°46.81'
Longitude W76°26.93'

Field Elevation
23