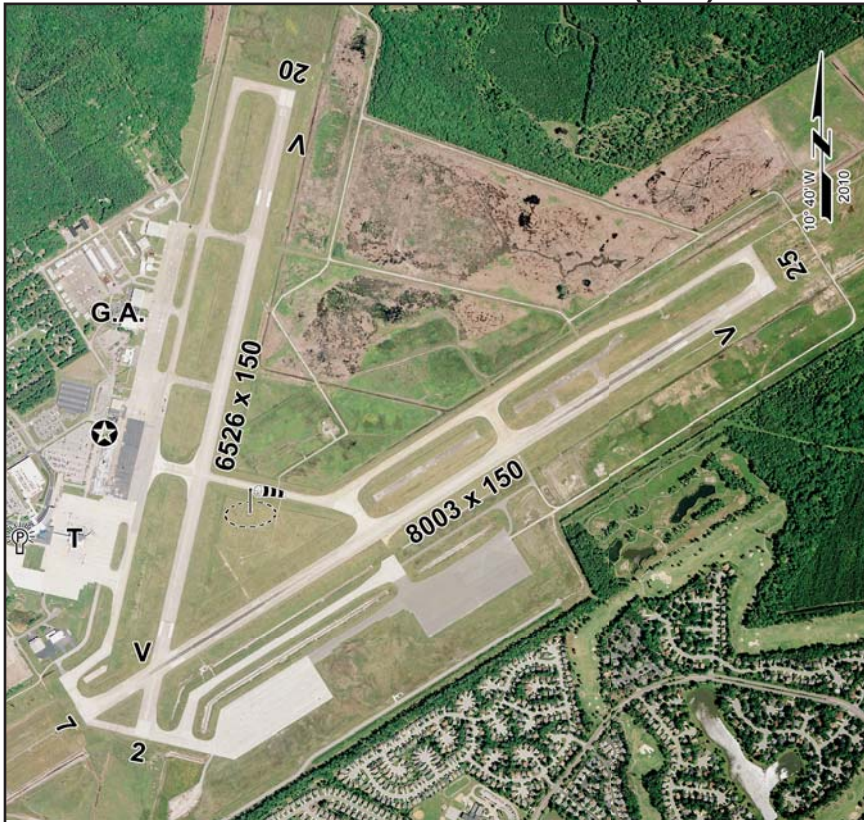


NEWPORT NEWS/WILLIAMSBURG INT'L (PHF) 9 NW



Sectional Chart: Washington

Runway: Rwy 07-25 H8003 x 150 (CONC-GRVD), Rwy 02-20 H6526 x 150 (CONC-GRVD)

Traffic Pattern: N/A

Runway Lights: HIRL

Rotating Beacon: Yes

Fuel: 100 LL, Jet A

Maintenance: Major AF & PP

Manager: Ken Spirito, 900 Bland Boulevard, Suite G, Newport News, Virginia 23602-4389, (757) 877-0221

Airport Telephone: (757) 877-0221

Airport Operators: Peninsula Airport Commission, 900 Bland Boulevard, Suite G, Newport News, Virginia 23602-4389, (757) 877-0221

Hours of Operation: Attended continuously.

Remarks: Glider activity approximately 19 miles southwest of arpt, up to base of clouds. Birds and deer on and in/ov arpt. PPR 45 minutes for unscheduled air carrier ops with more than 30 passenger seats – call manager at (757) 877-0221. Rwy 07-25 spalling, weeds, and pavement cracks. When twr clsd HIRL Rwy 02-20; VASI Rwy 02 and Rwy 20; REIL Rwy 20;

HIRL Rwy 07-25 and twy lgts on continuously. Rwy 07 MALSR unmonitored. Ldg fee for acft over 12,500 lbs. Flight Notification Service (ADCUS) available.

Points of Interest: Newport News Shipyard, NASA, Colonial Williamsburg, Busch Gardens, Water Country USA, Jamestown Festival Park, Yorktown Victory Center

Web Site: www.flyphf.com

Weather Data Sources: ASOS 128.65 (757) 874-3682

Communications: CTAF 118.7, ATIS 128.65, Unicom 122.95, RCO 122.65 122.2 (Leesburg Radio), Norfolk APP CON 125.7, Norfolk DEP CON 124.9, CLNC DEL 124.9 (when twr clsd), Tower 118.7 (1100-0400Z±), GND CON 121.9, CLNC DEL 121.65, PRE TAXI CLNC 121.65,

Navigation Aids: Norfolk (H) VORTAC 116.9; Henry NDB (MHW) 375; ILS/DME Rwy 07 110.1; ILS/DME Rwy 25 110.1; ILS/DME Rwy 20 109.3 (LOC only)

Published Instrument Approach: Yes

Approach Lighting: Rwy 07 MALSR; Rwy 25 REIL, VASI; Rwy 02 VASI; Rwy 20 REIL, VASI.

NEWPORT NEWS

Latitude **N37°07.91'**
Longitude **W76°29.58'**

Field Elevation
42